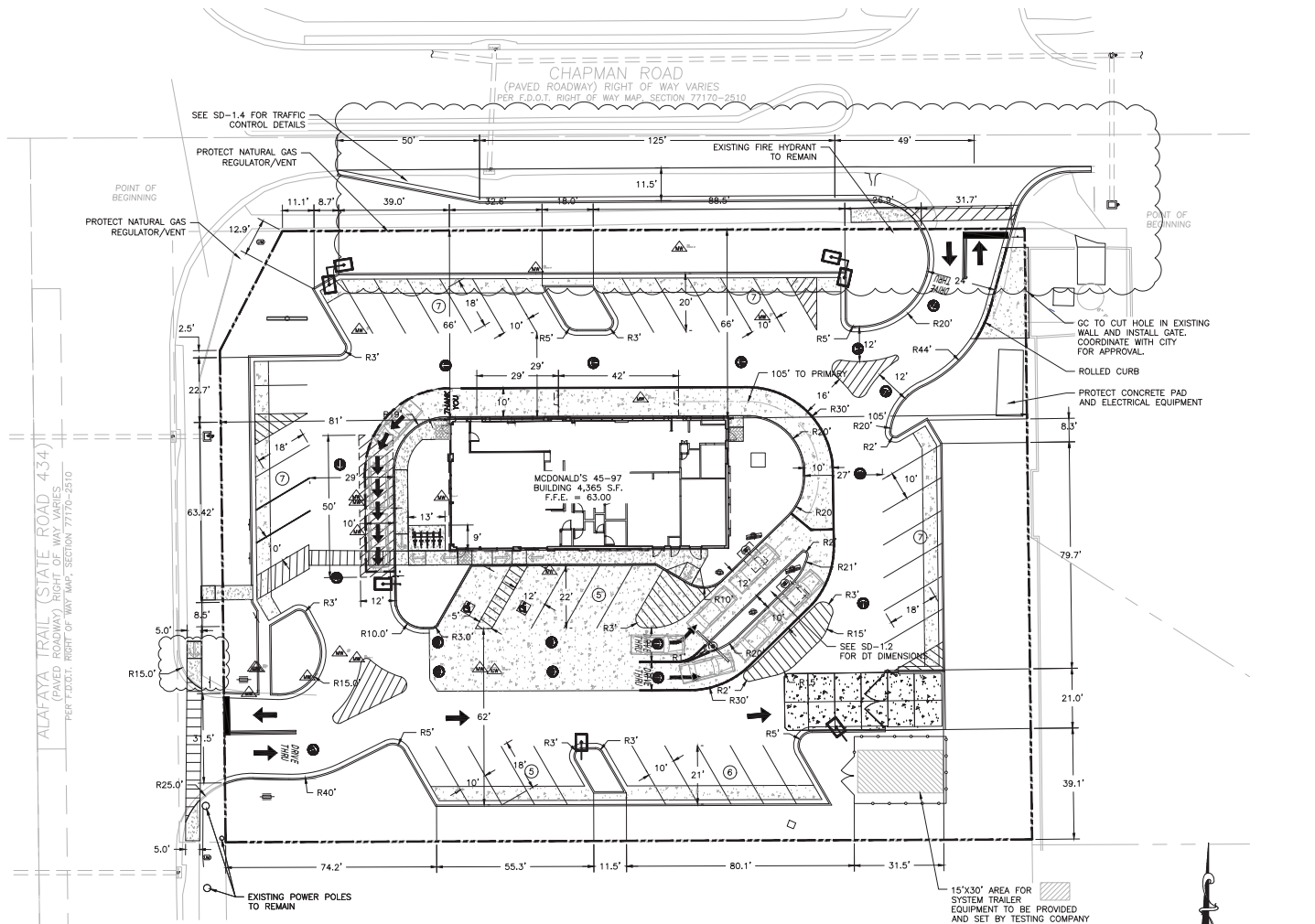


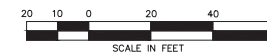
ATTACHMENT 2




LUKE WEMETTE, PROFESSIONAL
ENGINEER, STATE OF FLORIDA, LICENSE
NO. 92423

THIS ITEM HAS BEEN ELECTRONICALLY
SIGNED AND SEALED BY LUKE WEMETTE,
P.E., USING A SHA AUTHENTICATION
CODE.

PRINTED COPIES OF THIS DOCUMENT
ARE NOT CONSIDERED SIGNED AND
SEALED AND THE SHA AUTHENTICATION
CODE MUST BE VERIFIED ON ANY
ELECTRONIC COPIES.



DATE _____



ONE GLENLAKE PARKWAY
SUITE 500
ATLANTA, GEORGIA 30328-5372

4		
3		
2	3/13/23	SITE LAYOUT REVISED
1		
NO.	DATE:	DESCRIPTION
REVISIONS		



DRAWING TITLE: LAYOUT PLAN
PROJECT NAME: McDONALD'S RESTAURANT 688 E CHAPMAN RD ONIEDO, FL 32769
CLIENT: McDONALD'S CORPORATION ONE GLENLAKE PARKWAY, SUITE 500, ATLANTA, GA 30328

PROJECT NO.:	PROJ. MGR.:
DATE:	LW
12/19/22	DRWN. BY:
SCALE:	JK
AS NOTED	CHKD. BY:
	TC
DRAWING SERIES:	
SITE	
SHEET NO.	
C-2.1	